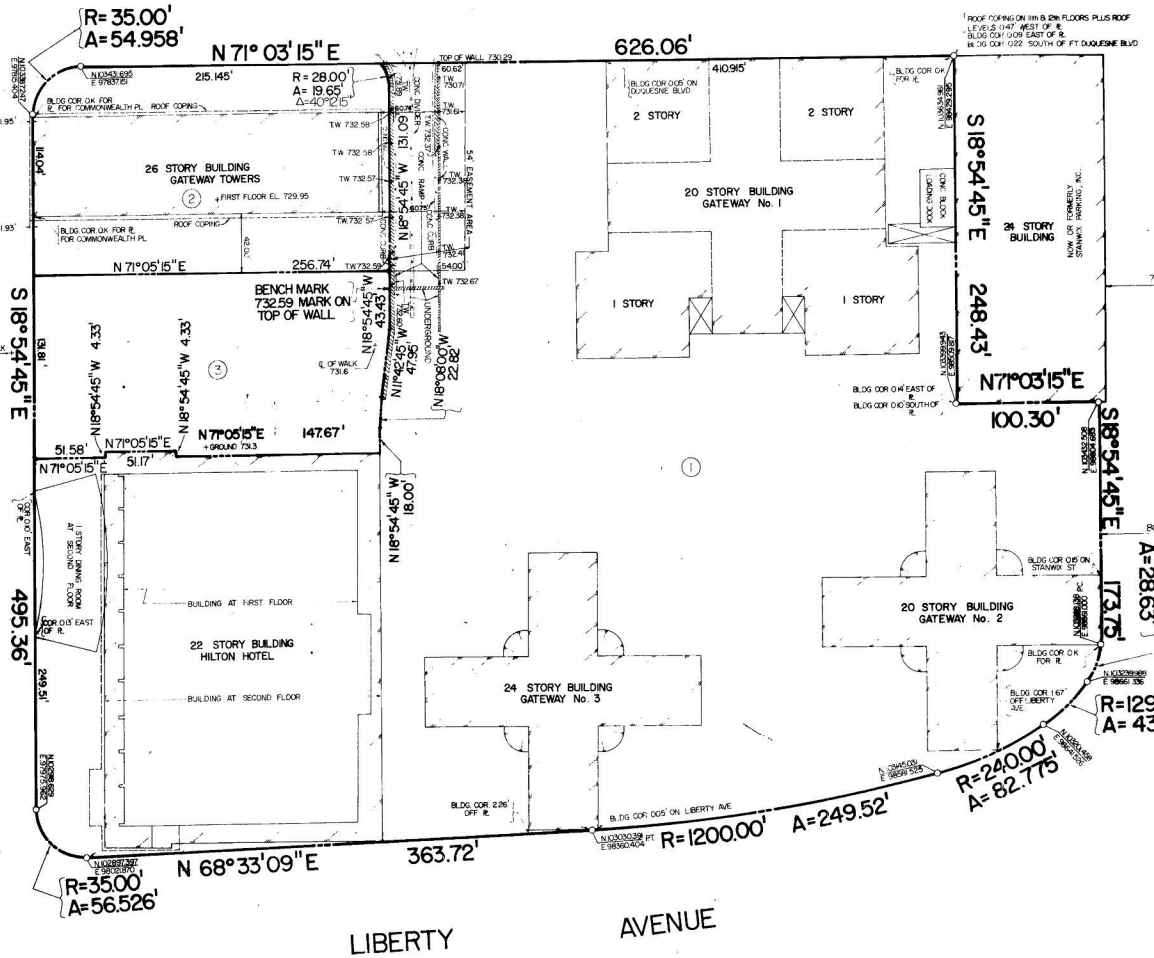




FORT DUQUESNE BOULEVARD

COMMONWEALTH PLACE



KNOW ALL MEN BY THESE PRESENTS, THAT THE EQUITABLE LIFE ASSURANCE SOCIETY OF THE UNITED STATES, A CORPORATION IN THE STATE OF NEW YORK, DOES HEREBY ADOPT THIS PLAN AS ITS PLAN OF LOTS OF ITS PROPERTY, SITUATE IN THE 2ND WARD, CITY OF PITTSBURGH, ALLEGHENY COUNTY, PENNSYLVANIA.

IN WITNESS WHEREOF THE SAID CORPORATION HAS CAUSED ITS CORPORATE SEAL TO BE AFFIXED BY THE OFFICE OF ITS VICE PRESIDENT AND THE SAME TO BE ATTESTED BY ITS ASSISTANT SECRETARY, THIS 19th DAY OF June, 1919.

*William J. Mullan*  
 ASSISTANT SECRETARY

IN THIS 19th DAY OF June, 1919, BEFORE A NOTARY PUBLIC IN AND FOR SAID COUNTY AND STATE PERSONALLY APPEARED *William J. Mullan*, VICE PRESIDENT OF THE EQUITABLE LIFE ASSURANCE SOCIETY OF THE UNITED STATES, WHO, BEING DULY SWORN, DEPOSED AND SAITH THAT HE WAS PERSONALLY PRESENT AT THE EXECUTION OF THE ASSIGNMENT, RELEASE AND DEDICATION AND SAW THE COMMON AND CORPORATE SEAL OF THE SAID CORPORATION DULY AFFIXED, AND THAT THE ABOVE BELIEVES AND INDICATION WAS DULY SIGNED AND SEALED BY AND AS FOR THE ACT AND DEED OF SAID THE EQUITABLE LIFE ASSURANCE SOCIETY OF THE UNITED STATES, FOR THE USES AND PURPOSES THEREIN MENTIONED, AND THAT THE NAME OF SAID CORPORATION SUBSCRIBED TO THE SAID RELEASE AND DEDICATION AS VICE PRESIDENT OF SAID CORPORATION, IN ATTESTATION OF THE ACT, EXECUTION AND DELIVERY OF SAID RELEASE AND DEDICATION IS THIS 19th DAY OF June, 1919.

SWORN TO AND SUBSCRIBED BEFORE IN THE DAY DATE ABOVE WRITTEN.  
 WITNESS MY HAND AND NOTARIAL SEAL THIS 19th DAY OF June, 1919.  
 MY COMMISSION EXPIRES THE 19th DAY OF June, 1920.

*John J. Exler*  
 NOTARY PUBLIC

NO. THE EQUITABLE LIFE ASSURANCE SOCIETY OF THE UNITED STATES, BY THE SAID PLAN OF LOTS NO. 1, 2, 3, 4, 5, 6, 7, 8, 9, 10, 11, 12, 13, 14, 15, 16, 17, 18, 19, 20, 21, 22, 23, 24, 25, 26, 27, 28, 29, 30, 31, 32, 33, 34, 35, 36, 37, 38, 39, 40, 41, 42, 43, 44, 45, 46, 47, 48, 49, 50, 51, 52, 53, 54, 55, 56, 57, 58, 59, 60, 61, 62, 63, 64, 65, 66, 67, 68, 69, 70, 71, 72, 73, 74, 75, 76, 77, 78, 79, 80, 81, 82, 83, 84, 85, 86, 87, 88, 89, 90, 91, 92, 93, 94, 95, 96, 97, 98, 99, 100, 101, 102, 103, 104, 105, 106, 107, 108, 109, 110, 111, 112, 113, 114, 115, 116, 117, 118, 119, 120, 121, 122, 123, 124, 125, 126, 127, 128, 129, 130, 131, 132, 133, 134, 135, 136, 137, 138, 139, 140, 141, 142, 143, 144, 145, 146, 147, 148, 149, 150, 151, 152, 153, 154, 155, 156, 157, 158, 159, 160, 161, 162, 163, 164, 165, 166, 167, 168, 169, 170, 171, 172, 173, 174, 175, 176, 177, 178, 179, 180, 181, 182, 183, 184, 185, 186, 187, 188, 189, 190, 191, 192, 193, 194, 195, 196, 197, 198, 199, 200, 201, 202, 203, 204, 205, 206, 207, 208, 209, 210, 211, 212, 213, 214, 215, 216, 217, 218, 219, 220, 221, 222, 223, 224, 225, 226, 227, 228, 229, 230, 231, 232, 233, 234, 235, 236, 237, 238, 239, 240, 241, 242, 243, 244, 245, 246, 247, 248, 249, 250, 251, 252, 253, 254, 255, 256, 257, 258, 259, 260, 261, 262, 263, 264, 265, 266, 267, 268, 269, 270, 271, 272, 273, 274, 275, 276, 277, 278, 279, 280, 281, 282, 283, 284, 285, 286, 287, 288, 289, 290, 291, 292, 293, 294, 295, 296, 297, 298, 299, 300, 301, 302, 303, 304, 305, 306, 307, 308, 309, 310, 311, 312, 313, 314, 315, 316, 317, 318, 319, 320, 321, 322, 323, 324, 325, 326, 327, 328, 329, 330, 331, 332, 333, 334, 335, 336, 337, 338, 339, 340, 341, 342, 343, 344, 345, 346, 347, 348, 349, 350, 351, 352, 353, 354, 355, 356, 357, 358, 359, 360, 361, 362, 363, 364, 365, 366, 367, 368, 369, 370, 371, 372, 373, 374, 375, 376, 377, 378, 379, 380, 381, 382, 383, 384, 385, 386, 387, 388, 389, 390, 391, 392, 393, 394, 395, 396, 397, 398, 399, 400, 401, 402, 403, 404, 405, 406, 407, 408, 409, 410, 411, 412, 413, 414, 415, 416, 417, 418, 419, 420, 421, 422, 423, 424, 425, 426, 427, 428, 429, 430, 431, 432, 433, 434, 435, 436, 437, 438, 439, 440, 441, 442, 443, 444, 445, 446, 447, 448, 449, 450, 451, 452, 453, 454, 455, 456, 457, 458, 459, 460, 461, 462, 463, 464, 465, 466, 467, 468, 469, 470, 471, 472, 473, 474, 475, 476, 477, 478, 479, 480, 481, 482, 483, 484, 485, 486, 487, 488, 489, 490, 491, 492, 493, 494, 495, 496, 497, 498, 499, 500, 501, 502, 503, 504, 505, 506, 507, 508, 509, 510, 511, 512, 513, 514, 515, 516, 517, 518, 519, 520, 521, 522, 523, 524, 525, 526, 527, 528, 529, 530, 531, 532, 533, 534, 535, 536, 537, 538, 539, 540, 541, 542, 543, 544, 545, 546, 547, 548, 549, 550, 551, 552, 553, 554, 555, 556, 557, 558, 559, 560, 561, 562, 563, 564, 565, 566, 567, 568, 569, 570, 571, 572, 573, 574, 575, 576, 577, 578, 579, 580, 581, 582, 583, 584, 585, 586, 587, 588, 589, 590, 591, 592, 593, 594, 595, 596, 597, 598, 599, 600, 601, 602, 603, 604, 605, 606, 607, 608, 609, 610, 611, 612, 613, 614, 615, 616, 617, 618, 619, 620, 621, 622, 623, 624, 625, 626, 627, 628, 629, 630, 631, 632, 633, 634, 635, 636, 637, 638, 639, 640, 641, 642, 643, 644, 645, 646, 647, 648, 649, 650, 651, 652, 653, 654, 655, 656, 657, 658, 659, 660, 661, 662, 663, 664, 665, 666, 667, 668, 669, 670, 671, 672, 673, 674, 675, 676, 677, 678, 679, 680, 681, 682, 683, 684, 685, 686, 687, 688, 689, 690, 691, 692, 693, 694, 695, 696, 697, 698, 699, 700, 701, 702, 703, 704, 705, 706, 707, 708, 709, 710, 711, 712, 713, 714, 715, 716, 717, 718, 719, 720, 721, 722, 723, 724, 725, 726, 727, 728, 729, 730, 731, 732, 733, 734, 735, 736, 737, 738, 739, 740, 741, 742, 743, 744, 745, 746, 747, 748, 749, 750, 751, 752, 753, 754, 755, 756, 757, 758, 759, 760, 761, 762, 763, 764, 765, 766, 767, 768, 769, 770, 771, 772, 773, 774, 775, 776, 777, 778, 779, 780, 781, 782, 783, 784, 785, 786, 787, 788, 789, 790, 791, 792, 793, 794, 795, 796, 797, 798, 799, 800, 801, 802, 803, 804, 805, 806, 807, 808, 809, 810, 811, 812, 813, 814, 815, 816, 817, 818, 819, 820, 821, 822, 823, 824, 825, 826, 827, 828, 829, 830, 831, 832, 833, 834, 835, 836, 837, 838, 839, 840, 841, 842, 843, 844, 845, 846, 847, 848, 849, 850, 851, 852, 853, 854, 855, 856, 857, 858, 859, 860, 861, 862, 863, 864, 865, 866, 867, 868, 869, 870, 871, 872, 873, 874, 875, 876, 877, 878, 879, 880, 881, 882, 883, 884, 885, 886, 887, 888, 889, 890, 891, 892, 893, 894, 895, 896, 897, 898, 899, 900, 901, 902, 903, 904, 905, 906, 907, 908, 909, 910, 911, 912, 913, 914, 915, 916, 917, 918, 919, 920, 921, 922, 923, 924, 925, 926, 927, 928, 929, 930, 931, 932, 933, 934, 935, 936, 937, 938, 939, 940, 941, 942, 943, 944, 945, 946, 947, 948, 949, 950, 951, 952, 953, 954, 955, 956, 957, 958, 959, 960, 961, 962, 963, 964, 965, 966, 967, 968, 969, 970, 971, 972, 973, 974, 975, 976, 977, 978, 979, 980, 981, 982, 983, 984, 985, 986, 987, 988, 989, 990, 991, 992, 993, 994, 995, 996, 997, 998, 999, 1000.

*John J. Exler*  
 REGISTER

I, DONALD W. HANNEGAN, A REGISTERED SURVEYOR OF THE STATE OF PENNSYLVANIA, DO HEREBY CERTIFY THAT THIS PLAN CORRECTLY REPRESENTS THE LOTS, LANDS, STRIPS, RACS, AND HIGHWAYS AS SURVEYED AND PLOTTED BY ME FOR THE PURPOSE OF HEREIN.

STATE OF PENNSYLVANIA } SS.  
 COUNTY OF ALLEGHENY }  
 RECORDED IN THE RECORDS OFFICE FOR THE RECORDING OF DEEDS, PLANS, ETC., IN PLAN BOOK VOLUME 110  
 PAGES 96 to 96 real  
 GIVEN UNDER MY HAND AND SEAL THIS 21st DAY OF June, 1919.

*John J. Exler*  
 REGISTER

NOTE NO. 4: THE EQUITABLE LIFE ASSURANCE SOCIETY OF THE UNITED STATES AGREES UPON LOT IN THE PLANNING...

NOTE NO. 2: THE ABOVE EASEMENT AREA AND LOT NO. 2 TOGETHER CONSTITUTE A "ZONING LOT" AS DEFINED BY SECTION 202 OF THE ZONING ORDINANCE OF THE CITY OF PITTSBURGH, PA. USING SURVEY MONUMENT #110286250 E 9830229 MONUMENT #11030878 E 9822876 MONUMENT #11030878 W 309422'

NOTE NO. 3: LOT NO. 3 IS SUBJECT TO AN EASEMENT FOR UNOBSTRUCTED LIGHT AND AIR FOR LOT NO. 2 AND TO RESTRICTIONS ON THE TYPE AND HEIGHT OF STRUCTURES TO BE LOCATED ON LOT NO. 3. SEE THE ABOVE-MENTIONED DECLARATION OF EASEMENT RECORDED IN DEED BOOK VOLUME 802, PAGE 882, AS INSTRUMENT NO. 23445

NOTE: CO-ORDINATES BASED ON THE SYSTEM OF THE PLANNING COMMISSION OF THE CITY OF PITTSBURGH, PA. USING SURVEY MONUMENT #110286250 E 9830229 MONUMENT #11030878 E 9822876 MONUMENT #11030878 W 309422'

GATEWAY PLAN  
 BEING A SUBDIVISION OF LOTS IN THE ALLEGHENY COUNTY

2nd WARD CITY OF PITTSBURGH ALLEGHENY COUNTY

THE EQUITABLE LIFE ASSURANCE SOCIETY OF THE UNITED STATES

SCALE 1" = 40'  
 THE GATEWAY ENGINEERS