

1657  
1021

**EXHIBIT B**  
REVISED PLAT AND PLANS  
**GATEWAY TOWERS EXECUTIVE OFFICE CONDOMINIUM**

FORT DUQUESNE BOULEVARD CITY OF PITTSBURGH ALLEGHENY COUNTY PENNSYLVANIA

FOR  
**DUQUESNE PARTNERS**

PREPARED BY  
JAMES D. BROWN ASSOCIATES ARCHITECTS AND PLANNERS 850 RIDGE AVENUE PITTSBURGH, PENNSYLVANIA

REVISIONS

JAMES D. BROWN ASSOCIATES  
ARCHITECTS AND PLANNERS  
PITTSBURGH, PENNSYLVANIA

INDEX OF DRAWINGS

Sheet No.	Drawing Title
1.....	Revised Title Page and Notes
5.....	Revised West Section, Floor Plan, First Floor
6.....	Revised East Section, Floor Plan, First Floor
7.....	Revised West Section, Floor Plan, Second Floor
8.....	Revised East Section, Floor Plan, Second Floor
9.....	Revised West Section, Floor Plan, Third Floor
10.....	Revised East Section, Floor Plan, Third Floor

Note: Regardless of the dimensions on the Plans, no title lines shall be located closer than three inches (3") in from the plane separating a column/chase from the window frame, so that a legal party wall will not project further towards the window than that plane.

The vertical title lines of units, as shown herein, are subject to Section 3.2(d) of the Declaration upon installation of any Party Wall thereon.

The existing leasehold walls are shown on these plans for informational purposes only.

COMMONWEALTH OF PENNSYLVANIA :  
COUNTY OF ALLEGHENY :

SS:

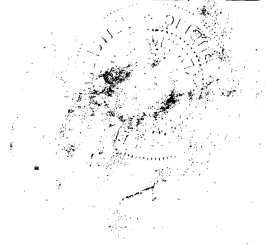
I hereby certify that on this, the 25<sup>th</sup> day of May, 1983, before me, the undersigned officer, personally appeared STEVEN V. BLUMENTHAL (known to me or satisfactorily proven to be the same), who acknowledged himself to be the President of Continental Fairview Group, Inc., a corporation, and a General Partner of Duquesne Partners, L.P., the Declarant of the Gateway Towers Executive Office Condominium, who being duly sworn according to law, deposes and says that he, as such officer, being authorized so to do, executed this Condominium Plat and Plan on behalf of the Declarant, and desires the same to be recorded.

IN WITNESS WHEREOF, I hereunto have affixed my hand and official seal the day and year first above written.

*Steven V. Blumenthal*  
Steven V. Blumenthal

*Belva A. Rosenstiel*  
Notary Public

State and County Last  
Aforesaid  
My Commission Expires:  
JUNE 21, 1983  
Secretary, Pennsylvania Association of Notaries



CERTIFICATION

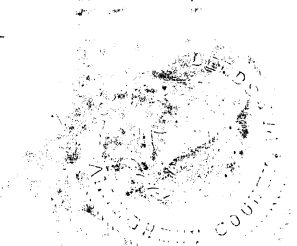
The undersigned, JAMES D. BROWN, being a Registered Professional Architect, Pennsylvania License No. RA-006660-X, hereby certifies that the Plans to which this Certification is affixed, consisting of six (6) sheets, No. Five (5) through No. Ten (10) of this Exhibit B, accurately depicts all existing conditions affecting the Gateway Towers Executive Office Condominium with respect to areas shown on said sheets, and contains all information required by Section 3210 of the Pennsylvania Uniform Condominium Act, Act No. 1980-82, 68 Pa. C.S. §3210.

*James D. Brown*  
James D. Brown

Commonwealth of Pennsylvania  
County of Allegheny

Recorded in the Recorder's Office for recording of Deeds, Plans, etc., in said County and Plan Book Volume 125  
Pages 44 to 150, given under my hand and seal this 25<sup>th</sup>  
day of May, 1983.

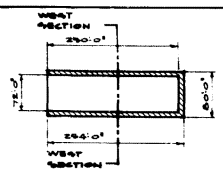
*Michael A. Della Vecchia*  
Recorder of Deeds



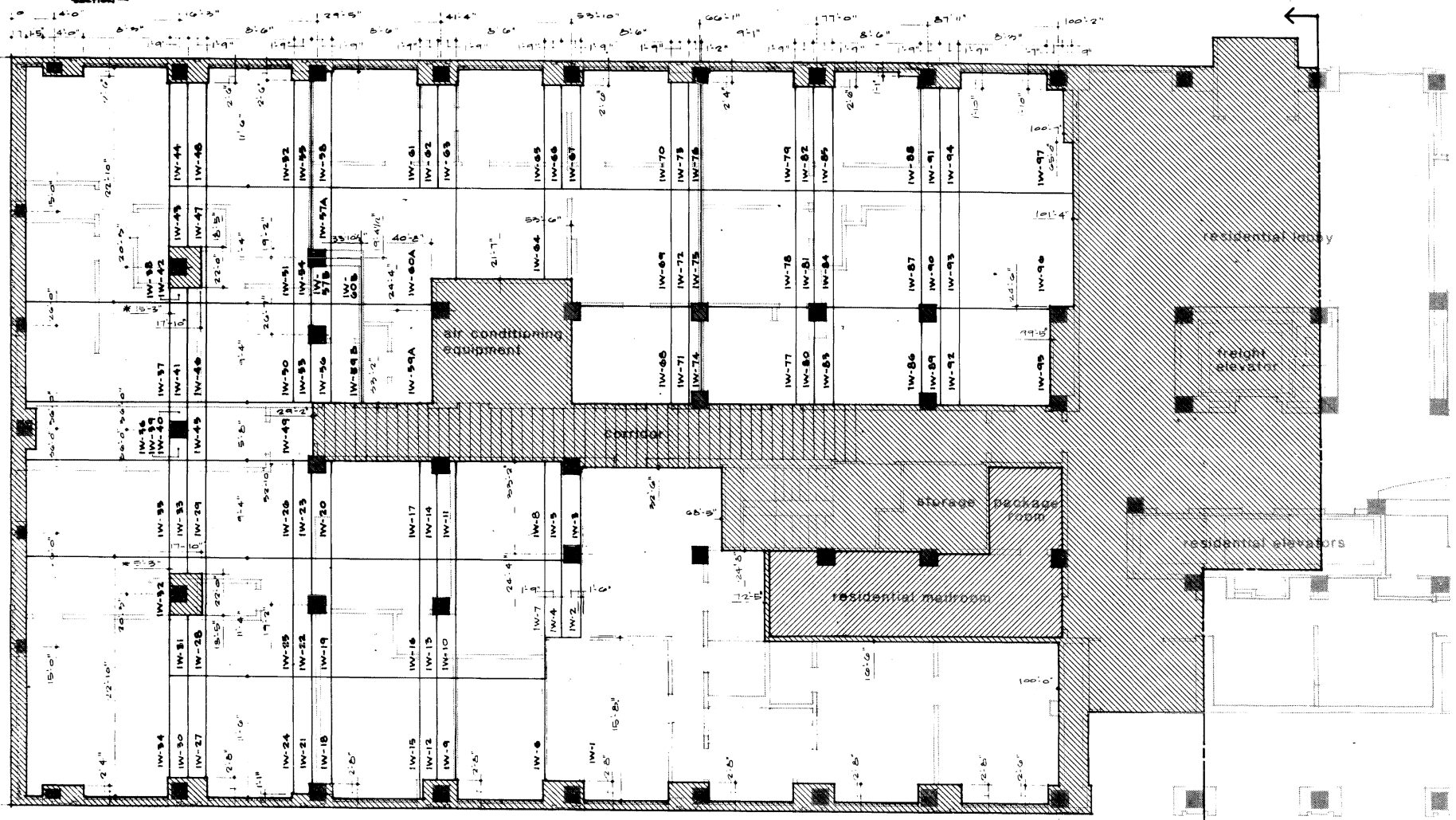
GATEWAY TOWERS  
EXECUTIVE OFFICE  
CONDOMINIUM  
DUQUESNE PARTNERS L P

DRAWING NO  
**1**  
DATE 12/15/82

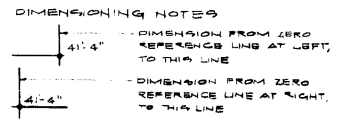
1657  
1/21



Common Element outside exterior plane of building. See Plat, Sheet No. 2.

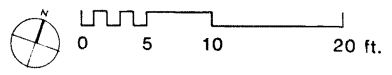


- Legend**
- IW-1 Condominium Units
  - Common Element
  - Common Element with Exclusive Easement by Residential Condominium. See Declaration.
  - Common Elements which may be assigned as Limited Common Elements.



**NOTE:** THE REVISIONS TO THIS SHEET CONSIST SOLELY OF SHOWING UNITS NUMBERED IW-57A, IW-57B, IW-57C, IW-57D, IW-57E, IW-57F, IW-57G, IW-57H, IW-57I, IW-57J, IW-57K, IW-57L, IW-57M, IW-57N, IW-57O, IW-57P, IW-57Q, IW-57R, IW-57S, IW-57T, IW-57U, IW-57V, IW-57W, IW-57X, IW-57Y, IW-57Z, IW-57AA, IW-57AB, IW-57AC, IW-57AD, IW-57AE, IW-57AF, IW-57AG, IW-57AH, IW-57AI, IW-57AJ, IW-57AK, IW-57AL, IW-57AM, IW-57AN, IW-57AO, IW-57AP, IW-57AQ, IW-57AR, IW-57AS, IW-57AT, IW-57AU, IW-57AV, IW-57AW, IW-57AX, IW-57AY, IW-57AZ, IW-57BA, IW-57BB, IW-57BC, IW-57BD, IW-57BE, IW-57BF, IW-57BG, IW-57BH, IW-57BI, IW-57BJ, IW-57BK, IW-57BL, IW-57BM, IW-57BN, IW-57BO, IW-57BP, IW-57BQ, IW-57BR, IW-57BS, IW-57BT, IW-57BU, IW-57BV, IW-57BW, IW-57BX, IW-57BY, IW-57BZ, IW-57CA, IW-57CB, IW-57CC, IW-57CD, IW-57CE, IW-57CF, IW-57CG, IW-57CH, IW-57CI, IW-57CJ, IW-57CK, IW-57CL, IW-57CM, IW-57CN, IW-57CO, IW-57CP, IW-57CQ, IW-57CR, IW-57CS, IW-57CT, IW-57CU, IW-57CV, IW-57CW, IW-57CX, IW-57CY, IW-57CZ, IW-57DA, IW-57DB, IW-57DC, IW-57DD, IW-57DE, IW-57DF, IW-57DG, IW-57DH, IW-57DI, IW-57DJ, IW-57DK, IW-57DL, IW-57DM, IW-57DN, IW-57DO, IW-57DP, IW-57DQ, IW-57DR, IW-57DS, IW-57DT, IW-57DU, IW-57DV, IW-57DW, IW-57DX, IW-57DY, IW-57DZ, IW-57EA, IW-57EB, IW-57EC, IW-57ED, IW-57EE, IW-57EF, IW-57EG, IW-57EH, IW-57EI, IW-57EJ, IW-57EK, IW-57EL, IW-57EM, IW-57EN, IW-57EO, IW-57EP, IW-57EQ, IW-57ER, IW-57ES, IW-57ET, IW-57EU, IW-57EV, IW-57EW, IW-57EX, IW-57EY, IW-57EZ, IW-57FA, IW-57FB, IW-57FC, IW-57FD, IW-57FE, IW-57FF, IW-57FG, IW-57FH, IW-57FI, IW-57FJ, IW-57FK, IW-57FL, IW-57FM, IW-57FN, IW-57FO, IW-57FP, IW-57FQ, IW-57FR, IW-57FS, IW-57FT, IW-57FU, IW-57FV, IW-57FW, IW-57FX, IW-57FY, IW-57FZ, IW-57GA, IW-57GB, IW-57GC, IW-57GD, IW-57GE, IW-57GF, IW-57GG, IW-57GH, IW-57GI, IW-57GJ, IW-57GK, IW-57GL, IW-57GM, IW-57GN, IW-57GO, IW-57GP, IW-57GQ, IW-57GR, IW-57GS, IW-57GT, IW-57GU, IW-57GV, IW-57GW, IW-57GX, IW-57GY, IW-57GZ, IW-57HA, IW-57HB, IW-57HC, IW-57HD, IW-57HE, IW-57HF, IW-57HG, IW-57HH, IW-57HI, IW-57HJ, IW-57HK, IW-57HL, IW-57HM, IW-57HN, IW-57HO, IW-57HP, IW-57HQ, IW-57HR, IW-57HS, IW-57HT, IW-57HU, IW-57HV, IW-57HW, IW-57HX, IW-57HY, IW-57HZ, IW-57IA, IW-57IB, IW-57IC, IW-57ID, IW-57IE, IW-57IF, IW-57IG, IW-57IH, IW-57II, IW-57IJ, IW-57IK, IW-57IL, IW-57IM, IW-57IN, IW-57IO, IW-57IP, IW-57IQ, IW-57IR, IW-57IS, IW-57IT, IW-57IU, IW-57IV, IW-57IW, IW-57IX, IW-57IY, IW-57IZ, IW-57JA, IW-57JB, IW-57JC, IW-57JD, IW-57JE, IW-57JF, IW-57JG, IW-57JH, IW-57JI, IW-57JJ, IW-57JK, IW-57JL, IW-57JM, IW-57JN, IW-57JO, IW-57JP, IW-57JQ, IW-57JR, IW-57JS, IW-57JT, IW-57JU, IW-57JV, IW-57JW, IW-57JX, IW-57JY, IW-57JZ, IW-57KA, IW-57KB, IW-57KC, IW-57KD, IW-57KE, IW-57KF, IW-57KG, IW-57KH, IW-57KI, IW-57KJ, IW-57KK, IW-57KL, IW-57KM, IW-57KN, IW-57KO, IW-57KP, IW-57KQ, IW-57KR, IW-57KS, IW-57KT, IW-57KU, IW-57KV, IW-57KW, IW-57KX, IW-57KY, IW-57KZ, IW-57LA, IW-57LB, IW-57LC, IW-57LD, IW-57LE, IW-57LF, IW-57LG, IW-57LH, IW-57LI, IW-57LJ, IW-57LK, IW-57LL, IW-57LM, IW-57LN, IW-57LO, IW-57LP, IW-57LQ, IW-57LR, IW-57LS, IW-57LT, IW-57LU, IW-57LV, IW-57LW, IW-57LX, IW-57LY, IW-57LZ, IW-57MA, IW-57MB, IW-57MC, IW-57MD, IW-57ME, IW-57MF, IW-57MG, IW-57MH, IW-57MI, IW-57MJ, IW-57MK, IW-57ML, IW-57MM, IW-57MN, IW-57MO, IW-57MP, IW-57MQ, IW-57MR, IW-57MS, IW-57MT, IW-57MU, IW-57MV, IW-57MW, IW-57MX, IW-57MY, IW-57MZ, IW-57NA, IW-57NB, IW-57NC, IW-57ND, IW-57NE, IW-57NF, IW-57NG, IW-57NH, IW-57NI, IW-57NJ, IW-57NK, IW-57NL, IW-57NM, IW-57NN, IW-57NO, IW-57NP, IW-57NQ, IW-57NR, IW-57NS, IW-57NT, IW-57NU, IW-57NV, IW-57NW, IW-57NX, IW-57NY, IW-57NZ, IW-57OA, IW-57OB, IW-57OC, IW-57OD, IW-57OE, IW-57OF, IW-57OG, IW-57OH, IW-57OI, IW-57OJ, IW-57OK, IW-57OL, IW-57OM, IW-57ON, IW-57OO, IW-57OP, IW-57OQ, IW-57OR, IW-57OS, IW-57OT, IW-57OU, IW-57OV, IW-57OW, IW-57OX, IW-57OY, IW-57OZ, IW-57PA, IW-57PB, IW-57PC, IW-57PD, IW-57PE, IW-57PF, IW-57PG, IW-57PH, IW-57PI, IW-57PJ, IW-57PK, IW-57PL, IW-57PM, IW-57PN, IW-57PO, IW-57PP, IW-57PQ, IW-57PR, IW-57PS, IW-57PT, IW-57PU, IW-57PV, IW-57PW, IW-57PX, IW-57PY, IW-57PZ, IW-57QA, IW-57QB, IW-57QC, IW-57QD, IW-57QE, IW-57QF, IW-57QG, IW-57QH, IW-57QI, IW-57QJ, IW-57QK, IW-57QL, IW-57QM, IW-57QN, IW-57QO, IW-57QP, IW-57QQ, IW-57QR, IW-57QS, IW-57QT, IW-57QU, IW-57QV, IW-57QW, IW-57QX, IW-57QY, IW-57QZ, IW-57RA, IW-57RB, IW-57RC, IW-57RD, IW-57RE, IW-57RF, IW-57RG, IW-57RH, IW-57RI, IW-57RJ, IW-57RK, IW-57RL, IW-57RM, IW-57RN, IW-57RO, IW-57RP, IW-57RQ, IW-57RR, IW-57RS, IW-57RT, IW-57RU, IW-57RV, IW-57RW, IW-57RX, IW-57RY, IW-57RZ, IW-57SA, IW-57SB, IW-57SC, IW-57SD, IW-57SE, IW-57SF, IW-57SG, IW-57SH, IW-57SI, IW-57SJ, IW-57SK, IW-57SL, IW-57SM, IW-57SN, IW-57SO, IW-57SP, IW-57SQ, IW-57SR, IW-57SS, IW-57ST, IW-57SU, IW-57SV, IW-57SW, IW-57SX, IW-57SY, IW-57SZ, IW-57TA, IW-57TB, IW-57TC, IW-57TD, IW-57TE, IW-57TF, IW-57TG, IW-57TH, IW-57TI, IW-57TJ, IW-57TK, IW-57TL, IW-57TM, IW-57TN, IW-57TO, IW-57TP, IW-57TQ, IW-57TR, IW-57TS, IW-57TT, IW-57TU, IW-57TV, IW-57TW, IW-57TX, IW-57TY, IW-57TZ, IW-57UA, IW-57UB, IW-57UC, IW-57UD, IW-57UE, IW-57UF, IW-57UG, IW-57UH, IW-57UI, IW-57UJ, IW-57UK, IW-57UL, IW-57UM, IW-57UN, IW-57UO, IW-57UP, IW-57UQ, IW-57UR, IW-57US, IW-57UT, IW-57UU, IW-57UV, IW-57UW, IW-57UX, IW-57UY, IW-57UZ, IW-57VA, IW-57VB, IW-57VC, IW-57VD, IW-57VE, IW-57VF, IW-57VG, IW-57VH, IW-57VI, IW-57VJ, IW-57VK, IW-57VL, IW-57VM, IW-57VN, IW-57VO, IW-57VP, IW-57VQ, IW-57VR, IW-57VS, IW-57VT, IW-57VU, IW-57VV, IW-57VW, IW-57VX, IW-57VY, IW-57VZ, IW-57WA, IW-57WB, IW-57WC, IW-57WD, IW-57WE, IW-57WF, IW-57WG, IW-57WH, IW-57WI, IW-57WJ, IW-57WK, IW-57WL, IW-57WM, IW-57WN, IW-57WO, IW-57WP, IW-57WQ, IW-57WR, IW-57WS, IW-57WT, IW-57WU, IW-57WV, IW-57WW, IW-57WX, IW-57WY, IW-57WZ, IW-57XA, IW-57XB, IW-57XC, IW-57XD, IW-57XE, IW-57XF, IW-57XG, IW-57XH, IW-57XI, IW-57XJ, IW-57XK, IW-57XL, IW-57XM, IW-57XN, IW-57XO, IW-57XP, IW-57XQ, IW-57XR, IW-57XS, IW-57XT, IW-57XU, IW-57XV, IW-57XW, IW-57XX, IW-57XY, IW-57XZ, IW-57YA, IW-57YB, IW-57YC, IW-57YD, IW-57YE, IW-57YF, IW-57YG, IW-57YH, IW-57YI, IW-57YJ, IW-57YK, IW-57YL, IW-57YM, IW-57YN, IW-57YO, IW-57YP, IW-57YQ, IW-57YR, IW-57YS, IW-57YT, IW-57YU, IW-57YV, IW-57YW, IW-57YX, IW-57YY, IW-57YZ, IW-57ZA, IW-57ZB, IW-57ZC, IW-57ZD, IW-57ZE, IW-57ZF, IW-57ZG, IW-57ZH, IW-57ZI, IW-57ZJ, IW-57ZK, IW-57ZL, IW-57ZM, IW-57ZN, IW-57ZO, IW-57ZP, IW-57ZQ, IW-57ZR, IW-57ZS, IW-57ZT, IW-57ZU, IW-57ZV, IW-57ZW, IW-57ZX, IW-57ZY, IW-57ZZ

West Section  
Floor Plan  
First Floor



REVISIONS  
REVISED TO IDENTIFY  
A UNITS & DIMENSIONS  
MAY 14, 1985

JAMES D BROWN ASSOCIATES  
ARCHITECTS AND PLANNERS  
PITTSBURGH, PENNSYLVANIA

GATEWAY TOWERS  
EXECUTIVE OFFICE  
CONDOMINIUM  
DUQUESNE PARTNERS L.P.

DRAWING NO  
**5**  
DATE 12/15/82

residential lobby

office lobby

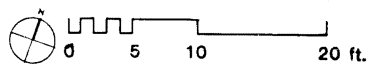
freight elevator

office elev.

residential elevators

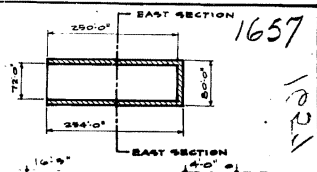
air conditioning equipment

East Section  
Floor Plan  
First Floor

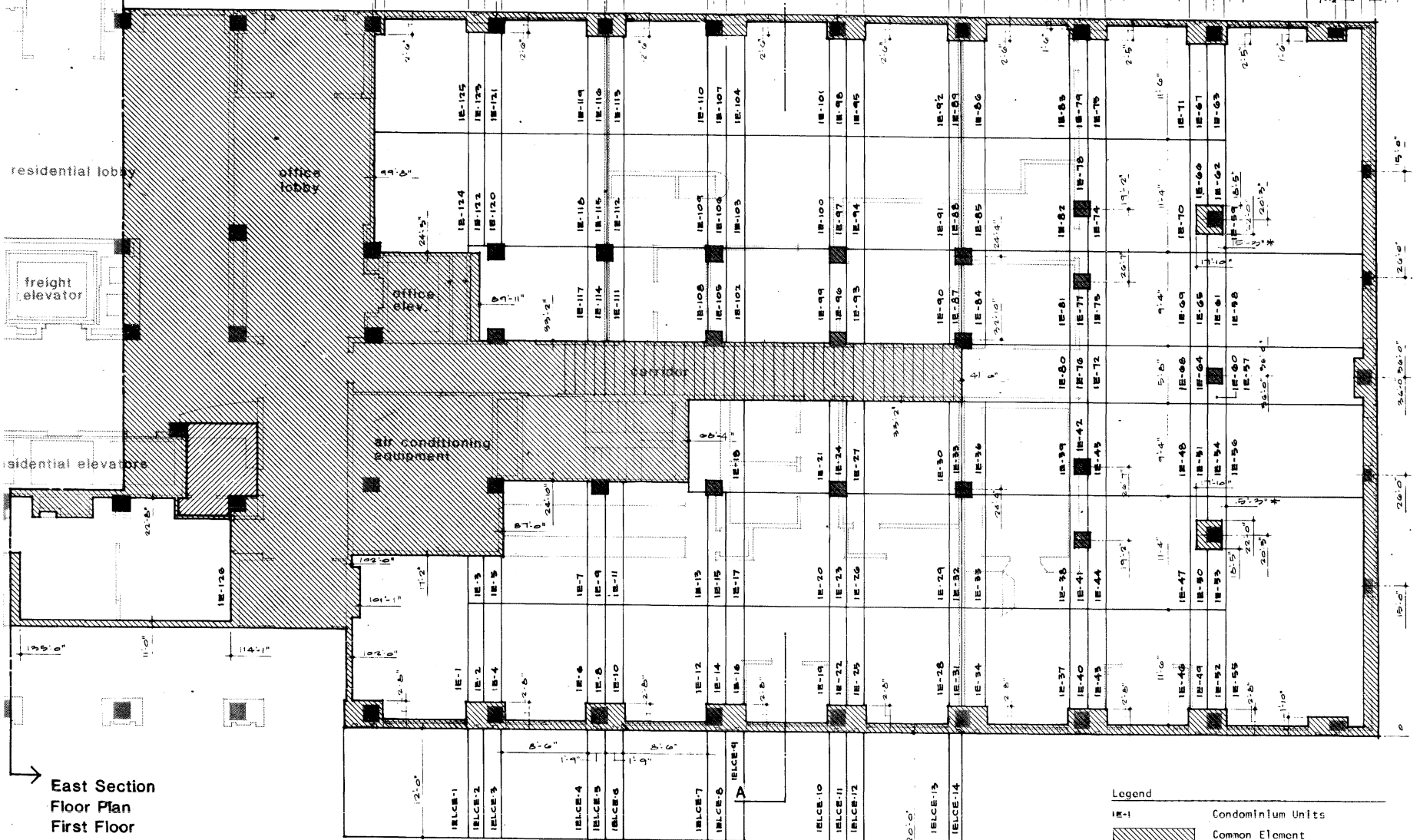


NOTE: REVISIONS TO THIS SHEET CONSIST SOLELY OF REVISIONING TWO DIMENSIONS MARKED WITH AN 'R' WRITTEN IN UNITS IE-59 AND IE-55

Common Element outside exterior plane of building. See Plat, Sheet No. 2.



1657  
1021



Legend

- IE-1 Condominium Units
- [Hatched Box] Common Element
- [Hatched Box] Common Element with Exclusive Easement by Residential Condominium. See Declaration.
- IELCE-1 Limited Common Element
- [Hatched Box] Common Elements which may be assigned as Limited Common Elements.

REVISIONS  
DIMENSIONS MARKED \*  
ARCHITECTS AND PLANNERS  
REVISED MAY 17 1985

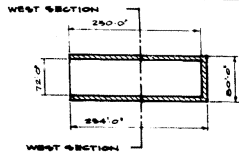
JAMES D. BROWN ASSOCIATES  
ARCHITECTS AND PLANNERS  
PITTSBURGH, PENNSYLVANIA

GATEWAY TOWERS  
EXECUTIVE OFFICE  
CONDOMINIUM  
DUQUESNE PARTNERS L.P.

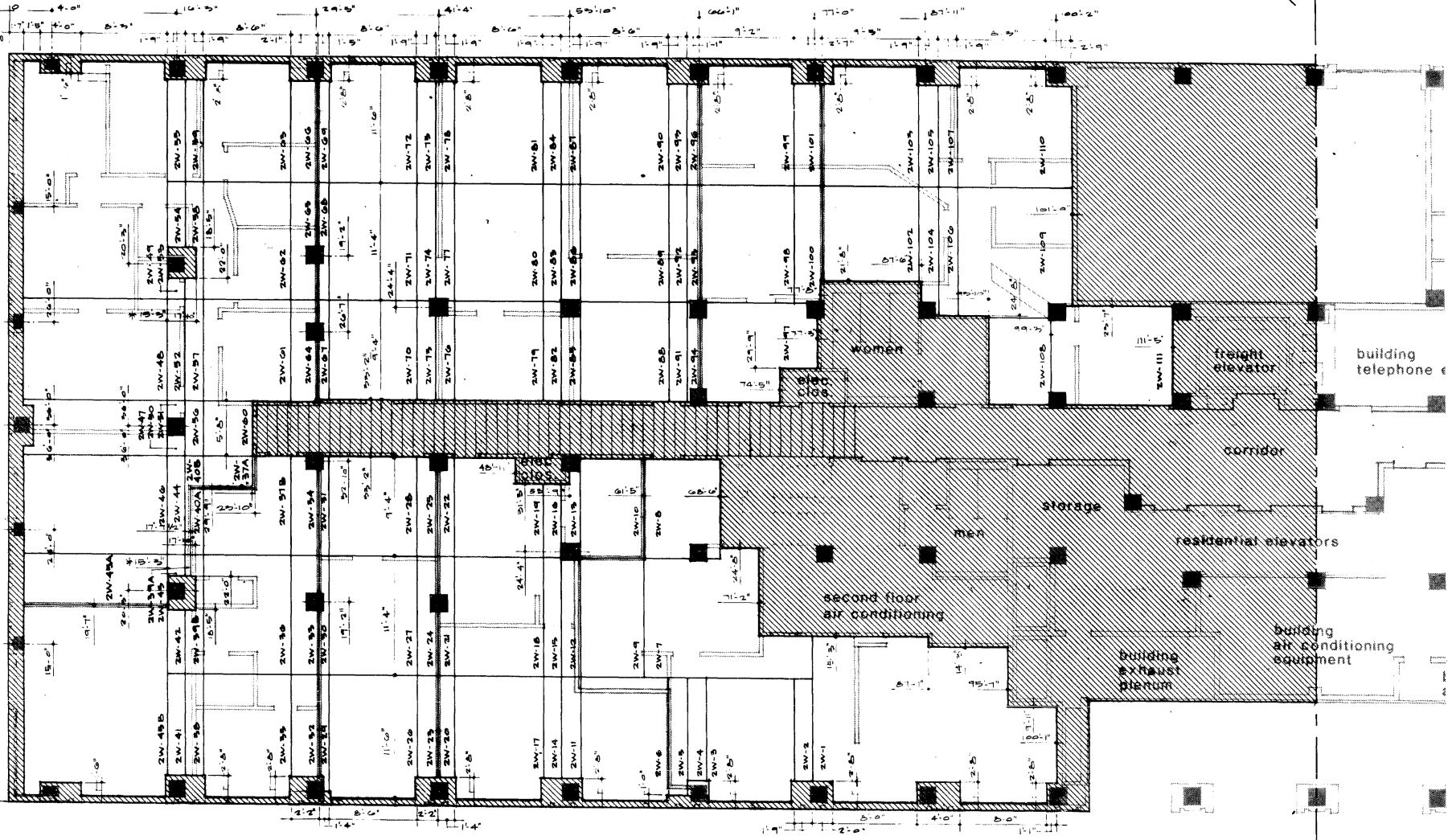
DRAWING NO  
**6**  
DATE 12/15/82

1657

1301



Common Element outside exterior plane of building. See Plat, Sheet No. 2.



- Legend**
- Condominium Units
  - Common Element
  - Common Elements which may be assigned as Limited Common Elements.

NOTE: REVISIONS TO THIS SHEET CONSIST SOLELY OF SHOWING UNITS NUMBERED 2W-51A, 2W-51B, 2W-51C, 2W-51D, 2W-51E, 2W-51F, 2W-51G, 2W-51H, 2W-51I, 2W-51J, 2W-51K, 2W-51L, 2W-51M, 2W-51N, 2W-51O, 2W-51P, 2W-51Q, 2W-51R, 2W-51S, 2W-51T, 2W-51U, 2W-51V, 2W-51W, 2W-51X, 2W-51Y, 2W-51Z, 2W-51AA, 2W-51AB, 2W-51AC, 2W-51AD, 2W-51AE, 2W-51AF, 2W-51AG, 2W-51AH, 2W-51AI, 2W-51AJ, 2W-51AK, 2W-51AL, 2W-51AM, 2W-51AN, 2W-51AO, 2W-51AP, 2W-51AQ, 2W-51AR, 2W-51AS, 2W-51AT, 2W-51AU, 2W-51AV, 2W-51AW, 2W-51AX, 2W-51AY, 2W-51AZ, 2W-51BA, 2W-51BB, 2W-51BC, 2W-51BD, 2W-51BE, 2W-51BF, 2W-51BG, 2W-51BH, 2W-51BI, 2W-51BJ, 2W-51BK, 2W-51BL, 2W-51BM, 2W-51BN, 2W-51BO, 2W-51BP, 2W-51BQ, 2W-51BR, 2W-51BS, 2W-51BT, 2W-51BU, 2W-51BV, 2W-51BW, 2W-51BX, 2W-51BY, 2W-51BZ, 2W-51CA, 2W-51CB, 2W-51CC, 2W-51CD, 2W-51CE, 2W-51CF, 2W-51CG, 2W-51CH, 2W-51CI, 2W-51CJ, 2W-51CK, 2W-51CL, 2W-51CM, 2W-51CN, 2W-51CO, 2W-51CP, 2W-51CQ, 2W-51CR, 2W-51CS, 2W-51CT, 2W-51CU, 2W-51CV, 2W-51CW, 2W-51CX, 2W-51CY, 2W-51CZ, 2W-51DA, 2W-51DB, 2W-51DC, 2W-51DD, 2W-51DE, 2W-51DF, 2W-51DG, 2W-51DH, 2W-51DI, 2W-51DJ, 2W-51DK, 2W-51DL, 2W-51DM, 2W-51DN, 2W-51DO, 2W-51DP, 2W-51DQ, 2W-51DR, 2W-51DS, 2W-51DT, 2W-51DU, 2W-51DV, 2W-51DW, 2W-51DX, 2W-51DY, 2W-51DZ, 2W-51EA, 2W-51EB, 2W-51EC, 2W-51ED, 2W-51EE, 2W-51EF, 2W-51EG, 2W-51EH, 2W-51EI, 2W-51EJ, 2W-51EK, 2W-51EL, 2W-51EM, 2W-51EN, 2W-51EO, 2W-51EP, 2W-51EQ, 2W-51ER, 2W-51ES, 2W-51ET, 2W-51EU, 2W-51EV, 2W-51EW, 2W-51EX, 2W-51EY, 2W-51EZ, 2W-51FA, 2W-51FB, 2W-51FC, 2W-51FD, 2W-51FE, 2W-51FF, 2W-51FG, 2W-51FH, 2W-51FI, 2W-51FJ, 2W-51FK, 2W-51FL, 2W-51FM, 2W-51FN, 2W-51FO, 2W-51FP, 2W-51FQ, 2W-51FR, 2W-51FS, 2W-51FT, 2W-51FU, 2W-51FV, 2W-51FW, 2W-51FX, 2W-51FY, 2W-51FZ, 2W-51GA, 2W-51GB, 2W-51GC, 2W-51GD, 2W-51GE, 2W-51GF, 2W-51GG, 2W-51GH, 2W-51GI, 2W-51GJ, 2W-51GK, 2W-51GL, 2W-51GM, 2W-51GN, 2W-51GO, 2W-51GP, 2W-51GQ, 2W-51GR, 2W-51GS, 2W-51GT, 2W-51GU, 2W-51GV, 2W-51GW, 2W-51GX, 2W-51GY, 2W-51GZ, 2W-51HA, 2W-51HB, 2W-51HC, 2W-51HD, 2W-51HE, 2W-51HF, 2W-51HG, 2W-51HH, 2W-51HI, 2W-51HJ, 2W-51HK, 2W-51HL, 2W-51HM, 2W-51HN, 2W-51HO, 2W-51HP, 2W-51HQ, 2W-51HR, 2W-51HS, 2W-51HT, 2W-51HU, 2W-51HV, 2W-51HW, 2W-51HX, 2W-51HY, 2W-51HZ, 2W-51IA, 2W-51IB, 2W-51IC, 2W-51ID, 2W-51IE, 2W-51IF, 2W-51IG, 2W-51IH, 2W-51II, 2W-51IJ, 2W-51IK, 2W-51IL, 2W-51IM, 2W-51IN, 2W-51IO, 2W-51IP, 2W-51IQ, 2W-51IR, 2W-51IS, 2W-51IT, 2W-51IU, 2W-51IV, 2W-51IW, 2W-51IX, 2W-51IY, 2W-51IZ, 2W-51JA, 2W-51JB, 2W-51JC, 2W-51JD, 2W-51JE, 2W-51JF, 2W-51JG, 2W-51JH, 2W-51JI, 2W-51JJ, 2W-51JK, 2W-51JL, 2W-51JM, 2W-51JN, 2W-51JO, 2W-51JP, 2W-51JQ, 2W-51JR, 2W-51JS, 2W-51JT, 2W-51JU, 2W-51JV, 2W-51JW, 2W-51JX, 2W-51JY, 2W-51JZ, 2W-51KA, 2W-51KB, 2W-51KC, 2W-51KD, 2W-51KE, 2W-51KF, 2W-51KG, 2W-51KH, 2W-51KI, 2W-51KJ, 2W-51KK, 2W-51KL, 2W-51KM, 2W-51KN, 2W-51KO, 2W-51KP, 2W-51KQ, 2W-51KR, 2W-51KS, 2W-51KT, 2W-51KU, 2W-51KV, 2W-51KW, 2W-51KX, 2W-51KY, 2W-51KZ, 2W-51LA, 2W-51LB, 2W-51LC, 2W-51LD, 2W-51LE, 2W-51LF, 2W-51LG, 2W-51LH, 2W-51LI, 2W-51LJ, 2W-51LK, 2W-51LL, 2W-51LM, 2W-51LN, 2W-51LO, 2W-51LP, 2W-51LQ, 2W-51LR, 2W-51LS, 2W-51LT, 2W-51LU, 2W-51LV, 2W-51LW, 2W-51LX, 2W-51LY, 2W-51LZ, 2W-51MA, 2W-51MB, 2W-51MC, 2W-51MD, 2W-51ME, 2W-51MF, 2W-51MG, 2W-51MH, 2W-51MI, 2W-51MJ, 2W-51MK, 2W-51ML, 2W-51MM, 2W-51MN, 2W-51MO, 2W-51MP, 2W-51MQ, 2W-51MR, 2W-51MS, 2W-51MT, 2W-51MU, 2W-51MV, 2W-51MW, 2W-51MX, 2W-51MY, 2W-51MZ, 2W-51NA, 2W-51NB, 2W-51NC, 2W-51ND, 2W-51NE, 2W-51NF, 2W-51NG, 2W-51NH, 2W-51NI, 2W-51NJ, 2W-51NK, 2W-51NL, 2W-51NM, 2W-51NN, 2W-51NO, 2W-51NP, 2W-51NQ, 2W-51NR, 2W-51NS, 2W-51NT, 2W-51NU, 2W-51NV, 2W-51NW, 2W-51NX, 2W-51NY, 2W-51NZ, 2W-51OA, 2W-51OB, 2W-51OC, 2W-51OD, 2W-51OE, 2W-51OF, 2W-51OG, 2W-51OH, 2W-51OI, 2W-51OJ, 2W-51OK, 2W-51OL, 2W-51OM, 2W-51ON, 2W-51OO, 2W-51OP, 2W-51OQ, 2W-51OR, 2W-51OS, 2W-51OT, 2W-51OU, 2W-51OV, 2W-51OW, 2W-51OX, 2W-51OY, 2W-51OZ, 2W-51PA, 2W-51PB, 2W-51PC, 2W-51PD, 2W-51PE, 2W-51PF, 2W-51PG, 2W-51PH, 2W-51PI, 2W-51PJ, 2W-51PK, 2W-51PL, 2W-51PM, 2W-51PN, 2W-51PO, 2W-51PP, 2W-51PQ, 2W-51PR, 2W-51PS, 2W-51PT, 2W-51PU, 2W-51PV, 2W-51PW, 2W-51PX, 2W-51PY, 2W-51PZ, 2W-51QA, 2W-51QB, 2W-51QC, 2W-51QD, 2W-51QE, 2W-51QF, 2W-51QG, 2W-51QH, 2W-51QI, 2W-51QJ, 2W-51QK, 2W-51QL, 2W-51QM, 2W-51QN, 2W-51QO, 2W-51QP, 2W-51QQ, 2W-51QR, 2W-51QS, 2W-51QT, 2W-51QU, 2W-51QV, 2W-51QW, 2W-51QX, 2W-51QY, 2W-51QZ, 2W-51RA, 2W-51RB, 2W-51RC, 2W-51RD, 2W-51RE, 2W-51RF, 2W-51RG, 2W-51RH, 2W-51RI, 2W-51RJ, 2W-51RK, 2W-51RL, 2W-51RM, 2W-51RN, 2W-51RO, 2W-51RP, 2W-51RQ, 2W-51RR, 2W-51RS, 2W-51RT, 2W-51RU, 2W-51RV, 2W-51RW, 2W-51RX, 2W-51RY, 2W-51RZ, 2W-51SA, 2W-51SB, 2W-51SC, 2W-51SD, 2W-51SE, 2W-51SF, 2W-51SG, 2W-51SH, 2W-51SI, 2W-51SJ, 2W-51SK, 2W-51SL, 2W-51SM, 2W-51SN, 2W-51SO, 2W-51SP, 2W-51SQ, 2W-51SR, 2W-51SS, 2W-51ST, 2W-51SU, 2W-51SV, 2W-51SW, 2W-51SX, 2W-51SY, 2W-51SZ, 2W-51TA, 2W-51TB, 2W-51TC, 2W-51TD, 2W-51TE, 2W-51TF, 2W-51TG, 2W-51TH, 2W-51TI, 2W-51TJ, 2W-51TK, 2W-51TL, 2W-51TM, 2W-51TN, 2W-51TO, 2W-51TP, 2W-51TQ, 2W-51TR, 2W-51TS, 2W-51TT, 2W-51TU, 2W-51TV, 2W-51TW, 2W-51TX, 2W-51TY, 2W-51TZ, 2W-51UA, 2W-51UB, 2W-51UC, 2W-51UD, 2W-51UE, 2W-51UF, 2W-51UG, 2W-51UH, 2W-51UI, 2W-51UJ, 2W-51UK, 2W-51UL, 2W-51UM, 2W-51UN, 2W-51UO, 2W-51UP, 2W-51UQ, 2W-51UR, 2W-51US, 2W-51UT, 2W-51UU, 2W-51UV, 2W-51UW, 2W-51UX, 2W-51UY, 2W-51UZ, 2W-51VA, 2W-51VB, 2W-51VC, 2W-51VD, 2W-51VE, 2W-51VF, 2W-51VG, 2W-51VH, 2W-51VI, 2W-51VJ, 2W-51VK, 2W-51VL, 2W-51VM, 2W-51VN, 2W-51VO, 2W-51VP, 2W-51VQ, 2W-51VR, 2W-51VS, 2W-51VT, 2W-51VU, 2W-51VV, 2W-51VW, 2W-51VX, 2W-51VY, 2W-51VZ, 2W-51WA, 2W-51WB, 2W-51WC, 2W-51WD, 2W-51WE, 2W-51WF, 2W-51WG, 2W-51WH, 2W-51WI, 2W-51WJ, 2W-51WK, 2W-51WL, 2W-51WM, 2W-51WN, 2W-51WO, 2W-51WP, 2W-51WQ, 2W-51WR, 2W-51WS, 2W-51WT, 2W-51WU, 2W-51WV, 2W-51WW, 2W-51WX, 2W-51WY, 2W-51WZ, 2W-51XA, 2W-51XB, 2W-51XC, 2W-51XD, 2W-51XE, 2W-51XF, 2W-51XG, 2W-51XH, 2W-51XI, 2W-51XJ, 2W-51XK, 2W-51XL, 2W-51XM, 2W-51XN, 2W-51XO, 2W-51XP, 2W-51XQ, 2W-51XR, 2W-51XS, 2W-51XT, 2W-51XU, 2W-51XV, 2W-51XW, 2W-51XX, 2W-51XY, 2W-51XZ, 2W-51YA, 2W-51YB, 2W-51YC, 2W-51YD, 2W-51YE, 2W-51YF, 2W-51YG, 2W-51YH, 2W-51YI, 2W-51YJ, 2W-51YK, 2W-51YL, 2W-51YM, 2W-51YN, 2W-51YO, 2W-51YP, 2W-51YQ, 2W-51YR, 2W-51YS, 2W-51YT, 2W-51YU, 2W-51YV, 2W-51YW, 2W-51YX, 2W-51YY, 2W-51YZ, 2W-51ZA, 2W-51ZB, 2W-51ZC, 2W-51ZD, 2W-51ZE, 2W-51ZF, 2W-51ZG, 2W-51ZH, 2W-51ZI, 2W-51ZJ, 2W-51ZK, 2W-51ZL, 2W-51ZM, 2W-51ZN, 2W-51ZO, 2W-51ZP, 2W-51ZQ, 2W-51ZR, 2W-51ZS, 2W-51ZT, 2W-51ZU, 2W-51ZV, 2W-51ZW, 2W-51ZX, 2W-51ZY, 2W-51ZZ

West Section  
Floor Plan  
Second Floor



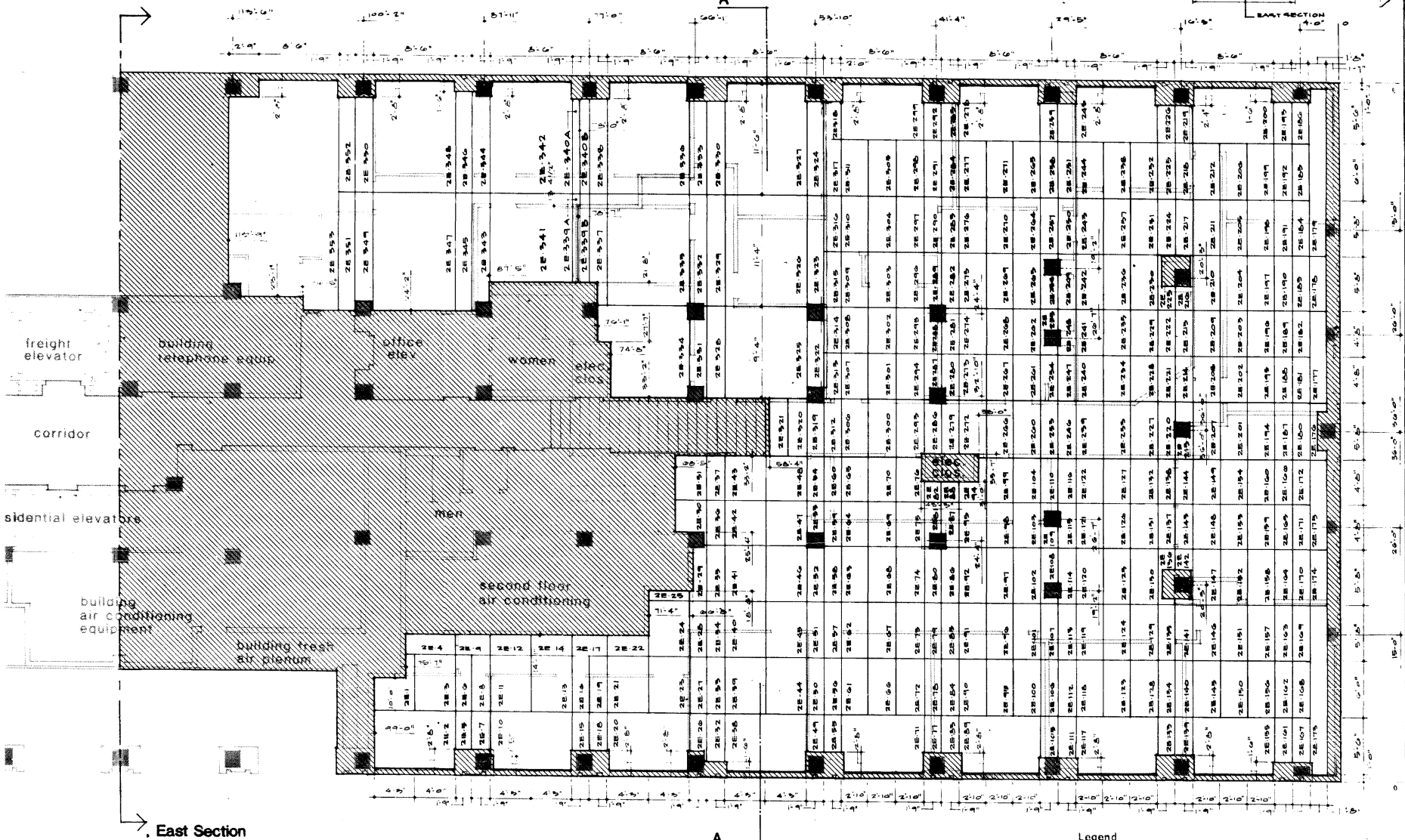
0 5 10 20 ft.

REVISIONS  
REVISED TO IDENTIFY  
UNIT 18 UNITS  
MAY 14, 1989

JAMES D. BROWN ASSOCIATES  
ARCHITECTS AND PLANNERS  
PITTSBURGH, PENNSYLVANIA

GATEWAY TOWERS  
EXECUTIVE OFFICE  
CONDOMINIUM  
DUQUESNE PARTNERS L.P.

DRAWING NO  
**7**  
DATE 12/15/82

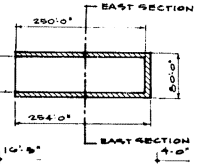


East Section  
Floor Plan  
Second Floor



0 5 10 20 ft.

Common Element outside exterior  
plane of building. See Plat,  
Sheet No. 2.



1057  
102

NOTE: THE REVISIONS TO THIS SHEET CONSIST  
SOLELY OF SHOWING UNITS NUMBERED  
2E-239A, 2E-239B, 2E-240A, 2E-240B

- Legend**
- 2E-1 Condominium Units
  - [Hatched Box] Common Element
  - [Hatched Box] Common Elements which may be assigned as Limited Common Elements.

REVISIONS  
REVISED TO IDENTIFY  
A UNITS B UNITS  
MAY 19, 1983

JAMES D. BROWN ASSOCIATES  
ARCHITECTS AND PLANNERS  
PITTSBURGH, PENNSYLVANIA

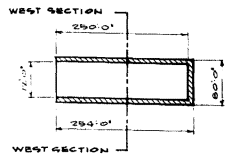
GATEWAY TOWERS  
EXECUTIVE OFFICE  
CONDOMINIUM  
DUQUESNE PARTNERS L.P.

DRAWING NO

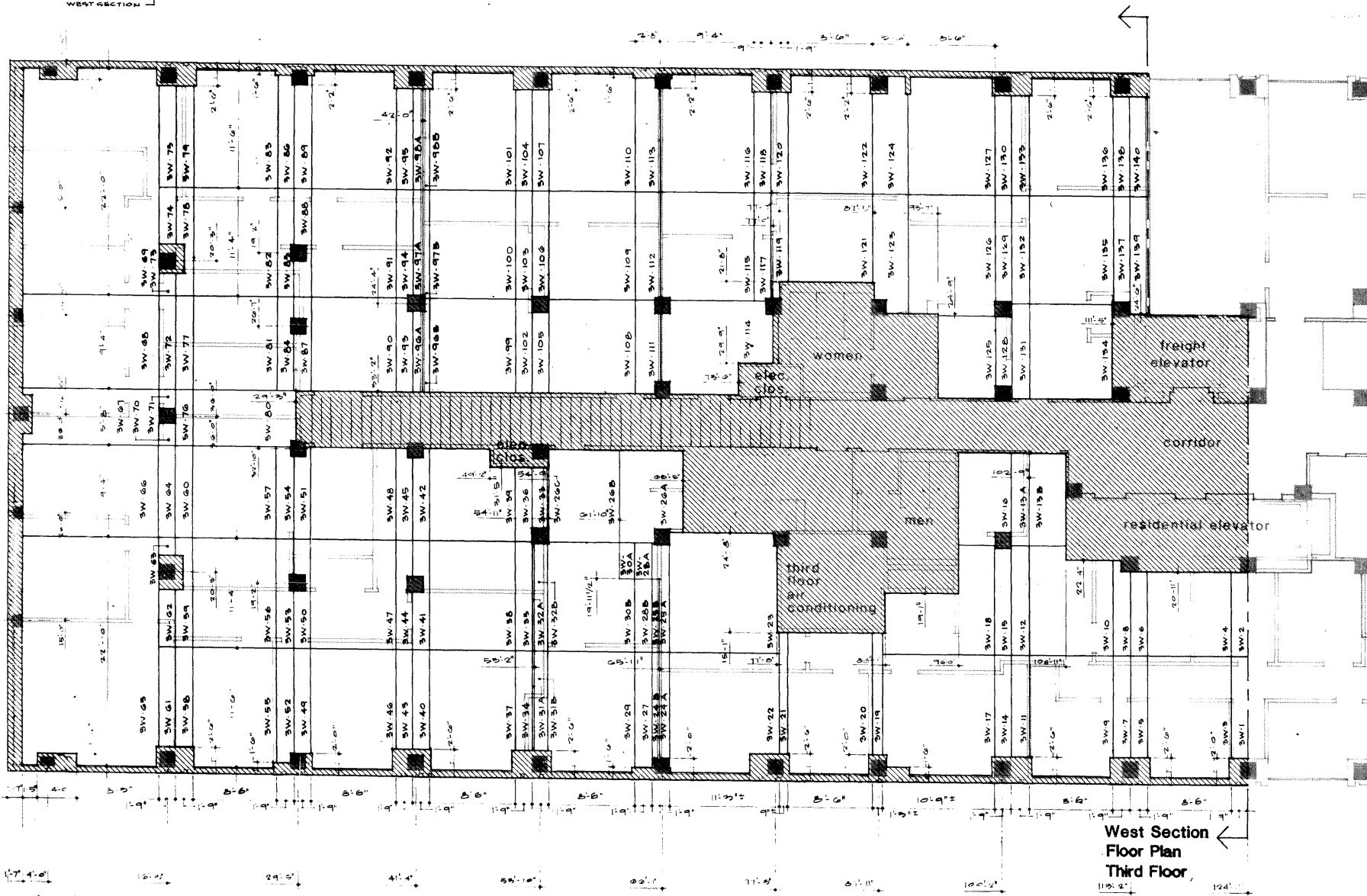
8

DATE 12-1-82

1657  
1021



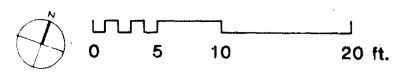
Common Element outside exterior plane of building. See Plat, Sheet No. 2.



- Legend**
- SW-1 Condominium Units
  - [Hatched Box] Common Element
  - [Cross-hatched Box] Common Elements which may be assigned as Limited Common Elements.

NOTE: REVISIONS TO THIS SHEET CONSIST SOLELY OF SHOWING UNITS NUMBERED SW-129A, SW-129B, SW-144A, SW-144B, SW-150A, SW-150B, SW-150C, SW-150D, SW-150E, SW-150F, SW-150G, SW-150H, SW-150I, SW-150J, SW-150K, SW-150L, SW-150M, SW-150N, SW-150O, SW-150P, SW-150Q, SW-150R, SW-150S, SW-150T, SW-150U, SW-150V, SW-150W, SW-150X, SW-150Y, SW-150Z, SW-151A, SW-151B, SW-151C, SW-151D, SW-151E, SW-151F, SW-151G, SW-151H, SW-151I, SW-151J, SW-151K, SW-151L, SW-151M, SW-151N, SW-151O, SW-151P, SW-151Q, SW-151R, SW-151S, SW-151T, SW-151U, SW-151V, SW-151W, SW-151X, SW-151Y, SW-151Z, SW-152A, SW-152B, SW-152C, SW-152D, SW-152E, SW-152F, SW-152G, SW-152H, SW-152I, SW-152J, SW-152K, SW-152L, SW-152M, SW-152N, SW-152O, SW-152P, SW-152Q, SW-152R, SW-152S, SW-152T, SW-152U, SW-152V, SW-152W, SW-152X, SW-152Y, SW-152Z, SW-153A, SW-153B, SW-153C, SW-153D, SW-153E, SW-153F, SW-153G, SW-153H, SW-153I, SW-153J, SW-153K, SW-153L, SW-153M, SW-153N, SW-153O, SW-153P, SW-153Q, SW-153R, SW-153S, SW-153T, SW-153U, SW-153V, SW-153W, SW-153X, SW-153Y, SW-153Z, SW-154A, SW-154B, SW-154C, SW-154D, SW-154E, SW-154F, SW-154G, SW-154H, SW-154I, SW-154J, SW-154K, SW-154L, SW-154M, SW-154N, SW-154O, SW-154P, SW-154Q, SW-154R, SW-154S, SW-154T, SW-154U, SW-154V, SW-154W, SW-154X, SW-154Y, SW-154Z, SW-155A, SW-155B, SW-155C, SW-155D, SW-155E, SW-155F, SW-155G, SW-155H, SW-155I, SW-155J, SW-155K, SW-155L, SW-155M, SW-155N, SW-155O, SW-155P, SW-155Q, SW-155R, SW-155S, SW-155T, SW-155U, SW-155V, SW-155W, SW-155X, SW-155Y, SW-155Z, SW-156A, SW-156B, SW-156C, SW-156D, SW-156E, SW-156F, SW-156G, SW-156H, SW-156I, SW-156J, SW-156K, SW-156L, SW-156M, SW-156N, SW-156O, SW-156P, SW-156Q, SW-156R, SW-156S, SW-156T, SW-156U, SW-156V, SW-156W, SW-156X, SW-156Y, SW-156Z, SW-157A, SW-157B, SW-157C, SW-157D, SW-157E, SW-157F, SW-157G, SW-157H, SW-157I, SW-157J, SW-157K, SW-157L, SW-157M, SW-157N, SW-157O, SW-157P, SW-157Q, SW-157R, SW-157S, SW-157T, SW-157U, SW-157V, SW-157W, SW-157X, SW-157Y, SW-157Z, SW-158A, SW-158B, SW-158C, SW-158D, SW-158E, SW-158F, SW-158G, SW-158H, SW-158I, SW-158J, SW-158K, SW-158L, SW-158M, SW-158N, SW-158O, SW-158P, SW-158Q, SW-158R, SW-158S, SW-158T, SW-158U, SW-158V, SW-158W, SW-158X, SW-158Y, SW-158Z, SW-159A, SW-159B, SW-159C, SW-159D, SW-159E, SW-159F, SW-159G, SW-159H, SW-159I, SW-159J, SW-159K, SW-159L, SW-159M, SW-159N, SW-159O, SW-159P, SW-159Q, SW-159R, SW-159S, SW-159T, SW-159U, SW-159V, SW-159W, SW-159X, SW-159Y, SW-159Z, SW-160A, SW-160B, SW-160C, SW-160D, SW-160E, SW-160F, SW-160G, SW-160H, SW-160I, SW-160J, SW-160K, SW-160L, SW-160M, SW-160N, SW-160O, SW-160P, SW-160Q, SW-160R, SW-160S, SW-160T, SW-160U, SW-160V, SW-160W, SW-160X, SW-160Y, SW-160Z.

West Section  
Floor Plan  
Third Floor



REVISIONS  
NO. DATE BY  
1 10/21/15 JMB

JAMES D. BROWN ASSOCIATES  
ARCHITECTS AND PLANNERS  
PITTSBURGH, PENNSYLVANIA

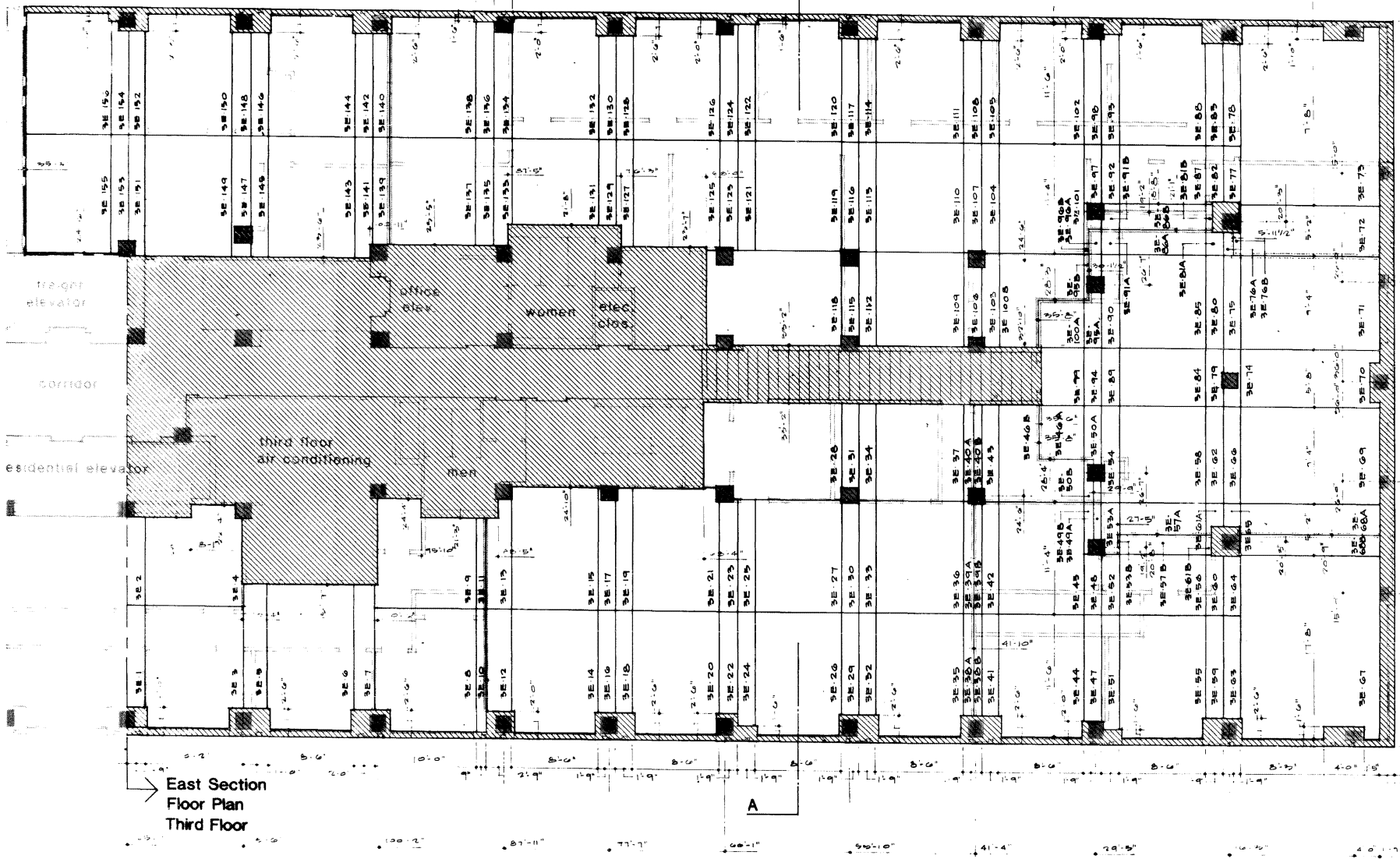
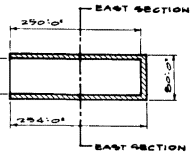
GATEWAY TOWERS  
EXECUTIVE OFFICE  
CONDOMINIUM  
DUQUESNE PARTNERS L.P.

DRAWING NO  
**9**  
DATE 12.15.15

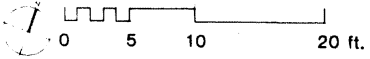


657  
10/21

Common Element outside exterior  
plane of building. See Plat,  
Sheet No. 2.



East Section  
Floor Plan  
Third Floor



NOTE: REVISIONS TO THIS SHEET CONSIST  
SOLELY OF CHANGING UNIT NUMBERS  
3E-25A, 3E-25B, 3E-25C, 3E-25D, 3E-25E, 3E-25F, 3E-25G, 3E-25H, 3E-25I, 3E-25J, 3E-25K, 3E-25L, 3E-25M, 3E-25N, 3E-25O, 3E-25P, 3E-25Q, 3E-25R, 3E-25S, 3E-25T, 3E-25U, 3E-25V, 3E-25W, 3E-25X, 3E-25Y, 3E-25Z, 3E-25AA, 3E-25AB, 3E-25AC, 3E-25AD, 3E-25AE, 3E-25AF, 3E-25AG, 3E-25AH, 3E-25AI, 3E-25AJ, 3E-25AK, 3E-25AL, 3E-25AM, 3E-25AN, 3E-25AO, 3E-25AP, 3E-25AQ, 3E-25AR, 3E-25AS, 3E-25AT, 3E-25AU, 3E-25AV, 3E-25AW, 3E-25AX, 3E-25AY, 3E-25AZ, 3E-25BA, 3E-25BB, 3E-25BC, 3E-25BD, 3E-25BE, 3E-25BF, 3E-25BG, 3E-25BH, 3E-25BI, 3E-25BJ, 3E-25BK, 3E-25BL, 3E-25BM, 3E-25BN, 3E-25BO, 3E-25BP, 3E-25BQ, 3E-25BR, 3E-25BS, 3E-25BT, 3E-25BU, 3E-25BV, 3E-25BW, 3E-25BX, 3E-25BY, 3E-25BZ, 3E-25CA, 3E-25CB, 3E-25CC, 3E-25CD, 3E-25CE, 3E-25CF, 3E-25CG, 3E-25CH, 3E-25CI, 3E-25CJ, 3E-25CK, 3E-25CL, 3E-25CM, 3E-25CN, 3E-25CO, 3E-25CP, 3E-25CQ, 3E-25CR, 3E-25CS, 3E-25CT, 3E-25CU, 3E-25CV, 3E-25CW, 3E-25CX, 3E-25CY, 3E-25CZ, 3E-25DA, 3E-25DB, 3E-25DC, 3E-25DD, 3E-25DE, 3E-25DF, 3E-25DG, 3E-25DH, 3E-25DI, 3E-25DJ, 3E-25DK, 3E-25DL, 3E-25DM, 3E-25DN, 3E-25DO, 3E-25DP, 3E-25DQ, 3E-25DR, 3E-25DS, 3E-25DT, 3E-25DU, 3E-25DV, 3E-25DW, 3E-25DX, 3E-25DY, 3E-25DZ, 3E-25EA, 3E-25EB, 3E-25EC, 3E-25ED, 3E-25EE, 3E-25EF, 3E-25EG, 3E-25EH, 3E-25EI, 3E-25EJ, 3E-25EK, 3E-25EL, 3E-25EM, 3E-25EN, 3E-25EO, 3E-25EP, 3E-25EQ, 3E-25ER, 3E-25ES, 3E-25ET, 3E-25EU, 3E-25EV, 3E-25EW, 3E-25EX, 3E-25EY, 3E-25EZ, 3E-25FA, 3E-25FB, 3E-25FC, 3E-25FD, 3E-25FE, 3E-25FF, 3E-25FG, 3E-25FH, 3E-25FI, 3E-25FJ, 3E-25FK, 3E-25FL, 3E-25FM, 3E-25FN, 3E-25FO, 3E-25FP, 3E-25FQ, 3E-25FR, 3E-25FS, 3E-25FT, 3E-25FU, 3E-25FV, 3E-25FW, 3E-25FX, 3E-25FY, 3E-25FZ, 3E-25GA, 3E-25GB, 3E-25GC, 3E-25GD, 3E-25GE, 3E-25GF, 3E-25GG, 3E-25GH, 3E-25GI, 3E-25GJ, 3E-25GK, 3E-25GL, 3E-25GM, 3E-25GN, 3E-25GO, 3E-25GP, 3E-25GQ, 3E-25GR, 3E-25GS, 3E-25GT, 3E-25GU, 3E-25GV, 3E-25GW, 3E-25GX, 3E-25GY, 3E-25GZ, 3E-25HA, 3E-25HB, 3E-25HC, 3E-25HD, 3E-25HE, 3E-25HF, 3E-25HG, 3E-25HH, 3E-25HI, 3E-25HJ, 3E-25HK, 3E-25HL, 3E-25HM, 3E-25HN, 3E-25HO, 3E-25HP, 3E-25HQ, 3E-25HR, 3E-25HS, 3E-25HT, 3E-25HU, 3E-25HV, 3E-25HW, 3E-25HX, 3E-25HY, 3E-25HZ, 3E-25IA, 3E-25IB, 3E-25IC, 3E-25ID, 3E-25IE, 3E-25IF, 3E-25IG, 3E-25IH, 3E-25II, 3E-25IJ, 3E-25IK, 3E-25IL, 3E-25IM, 3E-25IN, 3E-25IO, 3E-25IP, 3E-25IQ, 3E-25IR, 3E-25IS, 3E-25IT, 3E-25IU, 3E-25IV, 3E-25IW, 3E-25IX, 3E-25IY, 3E-25IZ, 3E-25JA, 3E-25JB, 3E-25JC, 3E-25JD, 3E-25JE, 3E-25JF, 3E-25JG, 3E-25JH, 3E-25JI, 3E-25JJ, 3E-25JK, 3E-25JL, 3E-25JM, 3E-25JN, 3E-25JO, 3E-25JP, 3E-25JQ, 3E-25JR, 3E-25JS, 3E-25JT, 3E-25JU, 3E-25JV, 3E-25JW, 3E-25JX, 3E-25JY, 3E-25JZ, 3E-25KA, 3E-25KB, 3E-25KC, 3E-25KD, 3E-25KE, 3E-25KF, 3E-25KG, 3E-25KH, 3E-25KI, 3E-25KJ, 3E-25KK, 3E-25KL, 3E-25KM, 3E-25KN, 3E-25KO, 3E-25KP, 3E-25KQ, 3E-25KR, 3E-25KS, 3E-25KT, 3E-25KU, 3E-25KV, 3E-25KW, 3E-25KX, 3E-25KY, 3E-25KZ, 3E-25LA, 3E-25LB, 3E-25LC, 3E-25LD, 3E-25LE, 3E-25LF, 3E-25LG, 3E-25LH, 3E-25LI, 3E-25LJ, 3E-25LK, 3E-25LL, 3E-25LM, 3E-25LN, 3E-25LO, 3E-25LP, 3E-25LQ, 3E-25LR, 3E-25LS, 3E-25LT, 3E-25LU, 3E-25LV, 3E-25LW, 3E-25LX, 3E-25LY, 3E-25LZ, 3E-25MA, 3E-25MB, 3E-25MC, 3E-25MD, 3E-25ME, 3E-25MF, 3E-25MG, 3E-25MH, 3E-25MI, 3E-25MJ, 3E-25MK, 3E-25ML, 3E-25MM, 3E-25MN, 3E-25MO, 3E-25MP, 3E-25MQ, 3E-25MR, 3E-25MS, 3E-25MT, 3E-25MU, 3E-25MV, 3E-25MW, 3E-25MX, 3E-25MY, 3E-25MZ, 3E-25NA, 3E-25NB, 3E-25NC, 3E-25ND, 3E-25NE, 3E-25NF, 3E-25NG, 3E-25NH, 3E-25NI, 3E-25NJ, 3E-25NK, 3E-25NL, 3E-25NM, 3E-25NN, 3E-25NO, 3E-25NP, 3E-25NQ, 3E-25NR, 3E-25NS, 3E-25NT, 3E-25NU, 3E-25NV, 3E-25NW, 3E-25NX, 3E-25NY, 3E-25NZ, 3E-25OA, 3E-25OB, 3E-25OC, 3E-25OD, 3E-25OE, 3E-25OF, 3E-25OG, 3E-25OH, 3E-25OI, 3E-25OJ, 3E-25OK, 3E-25OL, 3E-25OM, 3E-25ON, 3E-25OO, 3E-25OP, 3E-25OQ, 3E-25OR, 3E-25OS, 3E-25OT, 3E-25OU, 3E-25OV, 3E-25OW, 3E-25OX, 3E-25OY, 3E-25OZ, 3E-25PA, 3E-25PB, 3E-25PC, 3E-25PD, 3E-25PE, 3E-25PF, 3E-25PG, 3E-25PH, 3E-25PI, 3E-25PJ, 3E-25PK, 3E-25PL, 3E-25PM, 3E-25PN, 3E-25PO, 3E-25PP, 3E-25PQ, 3E-25PR, 3E-25PS, 3E-25PT, 3E-25PU, 3E-25PV, 3E-25PW, 3E-25PX, 3E-25PY, 3E-25PZ, 3E-25QA, 3E-25QB, 3E-25QC, 3E-25QD, 3E-25QE, 3E-25QF, 3E-25QG, 3E-25QH, 3E-25QI, 3E-25QJ, 3E-25QK, 3E-25QL, 3E-25QM, 3E-25QN, 3E-25QO, 3E-25QP, 3E-25QQ, 3E-25QR, 3E-25QS, 3E-25QT, 3E-25QU, 3E-25QV, 3E-25QW, 3E-25QX, 3E-25QY, 3E-25QZ, 3E-25RA, 3E-25RB, 3E-25RC, 3E-25RD, 3E-25RE, 3E-25RF, 3E-25RG, 3E-25RH, 3E-25RI, 3E-25RJ, 3E-25RK, 3E-25RL, 3E-25RM, 3E-25RN, 3E-25RO, 3E-25RP, 3E-25RQ, 3E-25RR, 3E-25RS, 3E-25RT, 3E-25RU, 3E-25RV, 3E-25RW, 3E-25RX, 3E-25RY, 3E-25RZ, 3E-25SA, 3E-25SB, 3E-25SC, 3E-25SD, 3E-25SE, 3E-25SF, 3E-25SG, 3E-25SH, 3E-25SI, 3E-25SJ, 3E-25SK, 3E-25SL, 3E-25SM, 3E-25SN, 3E-25SO, 3E-25SP, 3E-25SQ, 3E-25SR, 3E-25SS, 3E-25ST, 3E-25SU, 3E-25SV, 3E-25SW, 3E-25SX, 3E-25SY, 3E-25SZ, 3E-25TA, 3E-25TB, 3E-25TC, 3E-25TD, 3E-25TE, 3E-25TF, 3E-25TG, 3E-25TH, 3E-25TI, 3E-25TJ, 3E-25TK, 3E-25TL, 3E-25TM, 3E-25TN, 3E-25TO, 3E-25TP, 3E-25TQ, 3E-25TR, 3E-25TS, 3E-25TT, 3E-25TU, 3E-25TV, 3E-25TW, 3E-25TX, 3E-25TY, 3E-25TZ, 3E-25UA, 3E-25UB, 3E-25UC, 3E-25UD, 3E-25UE, 3E-25UF, 3E-25UG, 3E-25UH, 3E-25UI, 3E-25UJ, 3E-25UK, 3E-25UL, 3E-25UM, 3E-25UN, 3E-25UO, 3E-25UP, 3E-25UQ, 3E-25UR, 3E-25US, 3E-25UT, 3E-25UU, 3E-25UV, 3E-25UW, 3E-25UX, 3E-25UY, 3E-25UZ, 3E-25VA, 3E-25VB, 3E-25VC, 3E-25VD, 3E-25VE, 3E-25VF, 3E-25VG, 3E-25VH, 3E-25VI, 3E-25VJ, 3E-25VK, 3E-25VL, 3E-25VM, 3E-25VN, 3E-25VO, 3E-25VP, 3E-25VQ, 3E-25VR, 3E-25VS, 3E-25VT, 3E-25VU, 3E-25VV, 3E-25VW, 3E-25VX, 3E-25VY, 3E-25VZ, 3E-25WA, 3E-25WB, 3E-25WC, 3E-25WD, 3E-25WE, 3E-25WF, 3E-25WG, 3E-25WH, 3E-25WI, 3E-25WJ, 3E-25WK, 3E-25WL, 3E-25WM, 3E-25WN, 3E-25WO, 3E-25WP, 3E-25WQ, 3E-25WR, 3E-25WS, 3E-25WT, 3E-25WU, 3E-25WV, 3E-25WW, 3E-25WX, 3E-25WY, 3E-25WZ, 3E-25XA, 3E-25XB, 3E-25XC, 3E-25XD, 3E-25XE, 3E-25XF, 3E-25XG, 3E-25XH, 3E-25XI, 3E-25XJ, 3E-25XK, 3E-25XL, 3E-25XM, 3E-25XN, 3E-25XO, 3E-25XP, 3E-25XQ, 3E-25XR, 3E-25XS, 3E-25XT, 3E-25XU, 3E-25XV, 3E-25XW, 3E-25XX, 3E-25XY, 3E-25XZ, 3E-25YA, 3E-25YB, 3E-25YC, 3E-25YD, 3E-25YE, 3E-25YF, 3E-25YG, 3E-25YH, 3E-25YI, 3E-25YJ, 3E-25YK, 3E-25YL, 3E-25YM, 3E-25YN, 3E-25YO, 3E-25YP, 3E-25YQ, 3E-25YR, 3E-25YS, 3E-25YT, 3E-25YU, 3E-25YV, 3E-25YW, 3E-25YX, 3E-25YY, 3E-25YZ, 3E-25ZA, 3E-25ZB, 3E-25ZC, 3E-25ZD, 3E-25ZE, 3E-25ZF, 3E-25ZG, 3E-25ZH, 3E-25ZI, 3E-25ZJ, 3E-25ZK, 3E-25ZL, 3E-25ZM, 3E-25ZN, 3E-25ZO, 3E-25ZP, 3E-25ZQ, 3E-25ZR, 3E-25ZS, 3E-25ZT, 3E-25ZU, 3E-25ZV, 3E-25ZW, 3E-25ZX, 3E-25ZY, 3E-25ZZ

Legend  
 3E-1 Condominium Units  
 [Hatched Box] Common Element  
 [Hatched Box] Common Elements which may be assigned as Limited Common Elements.

REVISIONS  
 11/15/83  
 11/15/83  
 11/15/83  
 11/15/83

JAMES D. BROWN ASSOCIATES  
 ARCHITECTS AND PLANNERS  
 PITTSBURGH, PENNSYLVANIA

GATEWAY TOWERS  
 EXECUTIVE OFFICE  
 CONDOMINIUM  
 DUQUESNE PARTNERS L.P.

DRAWING NO  
**10**  
 DATE 10/21/83