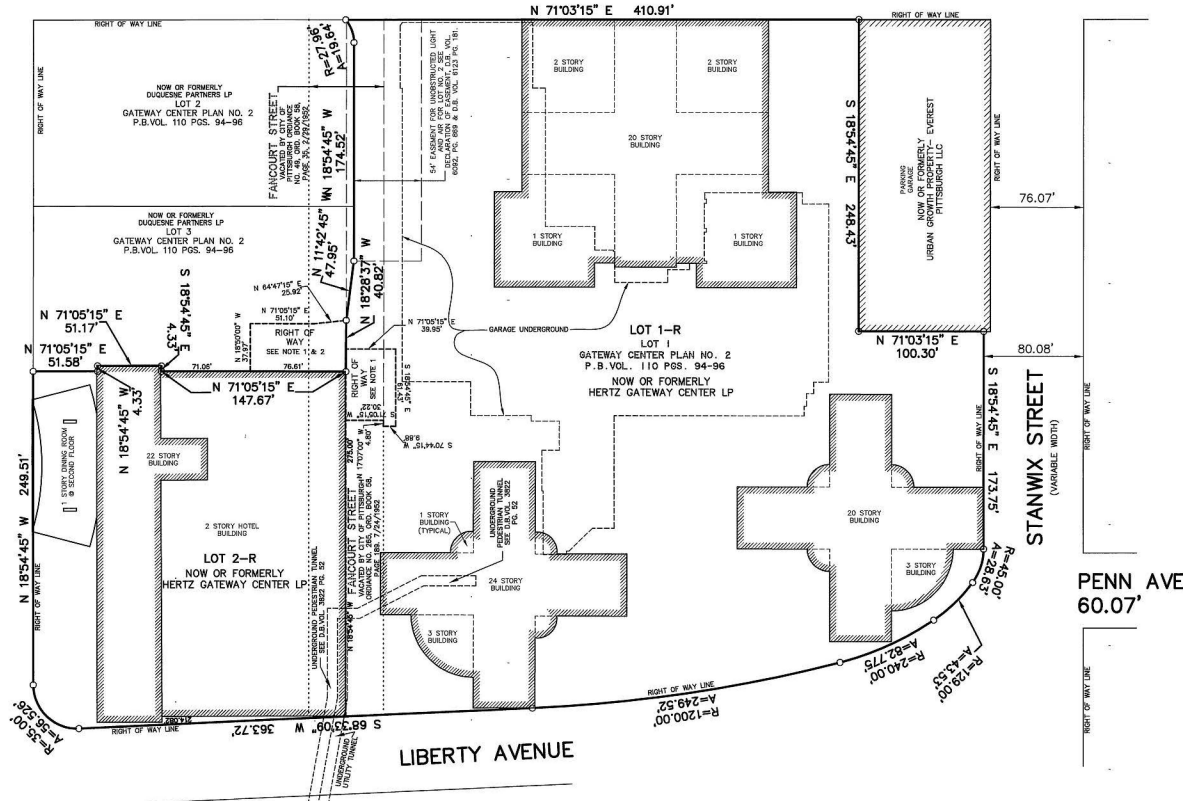


FORT DUQUESNE BOULEVARD



NOTE: ALL SIGNATURES MUST BE MADE WITH A BLACK INK FELT TIP PEN !!!

NOTE:  
 1. ALL THAT PORTION OF PROPERTY BELOW THE WATERPROOFING OVER THE CONCRETE ROOF SLABS SEE AGREEMENT OF LEASE, D.B.VOL. 3625, PAGE 1, PARCEL 2.  
 2. FOR UNDERGROUND LOADING DOCK RESERVATION, THIS AREA SEE D.B.VOL. 8123 PAGE 172.

KNOW ALL MEN BY THESE PRESENTS, THAT WE, THE HERTZ GATEWAY CENTER, LP, A LIMITED PARTNERSHIP OF DELAWARE, OF THE CITY OF PITTSBURGH, ALLEGHENY COUNTY, PENNSYLVANIA, FOR OURSELVES, OUR HEIRS, EXECUTORS, ADMINISTRATORS AND ASSIGNS, DO HEREBY ADOPT THIS PLAN, AC 317 PLAN OF LOTS OF OUR PROPERTY, SITUATE IN 2ND WARD, CITY OF PITTSBURGH, ALLEGHENY COUNTY, PENNSYLVANIA.

IN WITNESS WHEREOF WE HERETO SET OUR HANDS THIS 20th DAY OF July 2005

ATTEST:  
 Michelle Comarosa  
 Witness

STATE OF PENNSYLVANIA )  
 COUNTY OF ALLEGHENY ) SS.

BEFORE ME, THE SUBSCRIBER, A NOTARY PUBLIC IN AND FOR SAID STATE AND COUNTY, PERSONALLY CAME THE ABOVE NAMED Kevin Patrick Hannegan AND ACKNOWLEDGED THE FOREGOING RELEASE AND DEDICATION AND PLAN TO BE THEIR ACT AND DEED, AND DESIRES THE SAME TO BE RECORDED AS SUCH.

WITNESS MY HAND AND NOTARIAL SEAL  
 THIS 20 DAY OF July 2005  
 MY COMMISSION EXPIRES  
 THE 29 DAY OF August 2005

Notarial Seal  
 Notary Public  
 My Commission Expires Aug. 29, 2005



I, KEVIN P. HANNEGAN, A REGISTERED PROFESSIONAL SURVEYOR OF THE STATE OF PENNSYLVANIA, DO HEREBY CERTIFY THAT THIS PLAN CORRECTLY REPRESENTS THE LOTS, LANDS, STREETS, WAYS, AND HIGHWAYS AS SURVEYED AND PLOTTED BY ME FOR THE OWNERS OR AGENTS.

KEVIN P. HANNEGAN  
 REG. NO. SU-048336-E

STATE OF PENNSYLVANIA )  
 COUNTY OF ALLEGHENY ) SS.

RECORDED IN THE RECORDER'S OFFICE FOR THE RECORDING OF DEEDS, PLANS, ETC., IN SAID COUNTY IN PLAN BOOK WILLING FOR DEEDS, PAGE 157, DAY OF July 2005  
 WITNESS  
 Michelle Comarosa  
 Witness

WE, THE HERTZ GATEWAY CENTER, LP, A LIMITED PARTNERSHIP OF DELAWARE, OWNERS OF THE GATEWAY CENTER PLAN NO. 4 SUBDIVISION PLAN DO HEREBY CERTIFY THAT THE TITLE OF THIS PROPERTY IS IN THE NAME OF HERTZ GATEWAY CENTER, LP, AS RECORDED IN DEED BOOK VOLUME 1228, PAGE 157, RECORDER OF DEEDS'S OFFICE.

ATTEST:  
 Michelle Comarosa  
 Witness

WE, THE LASCALLE BANK NATIONAL ASSOCIATION, MORTGAGEE OF THE PROPERTY EMBRACED IN THIS PLAN OF SUBDIVISION, GATEWAY CENTER PLAN NO. 4 PLAN OF LOTS, DO HEREBY CONSENT TO THE RECORDING OF SAID PLAN IN THE RECORDER'S OFFICE OF ALLEGHENY COUNTY, PENNSYLVANIA, AND THE DEDICATIONS AND COVENANTS APPEARING HEREON.

Cynthia Purwick  
 MORTGAGEE

ALL DISTANCES ARE U.S. STANDARD MEASURE

LOT 1-R = 244,121 SQ.FT. OR 5.604 ACRES  
 LOT 2-R = 70,184 SQ.FT. OR 1.611 ACRES  
 TOTAL AREA = 314,305 SQ.FT. OR 7.215 ACRES

**GATEWAY CENTER PLAN NO. 4**  
 BEING A REVISION OF GATEWAY PLAN NO. 3 RECORDED IN THE OFFICE OF THE RECORDER OF ALLEGHENY COUNTY IN P.B.VOL. 110 PG. 94-96

SITUATE IN  
 2nd WARD- CITY OF PITTSBURGH  
 ALLEGHENY COUNTY, PA

MADE FOR  
**HERTZ GATEWAY CENTER, LP**

SCALE: 1"=50'  
 DATE: JUNE, 2005  
 DWG. NO. 400.009

THE GATEWAY ENGINEERS, INC.  
 CONSULTING ENGINEERS  
 1011 ALCOCK STREET  
 PITTSBURGH, PA 15220-3424  
 (412) 921-6330

CITY OF PITTSBURGH  
 DEPARTMENT OF CITY PLANNING

APPROVED: July 26, 2005  
 CITY PLANNING COMMISSION

ATTEST:  
 Chairman  
 Secretary

Doc Bk Vol Ps \$off Ps  
 316 PLN 250 199 1  
 Jul 29-2005